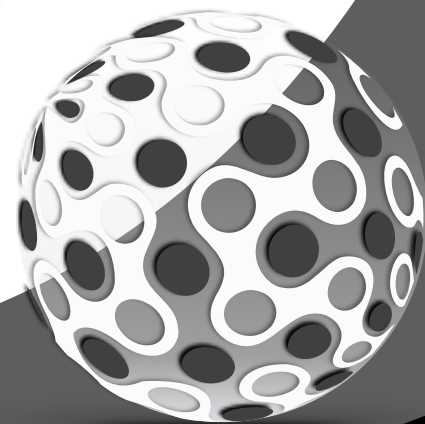


TROMBONE

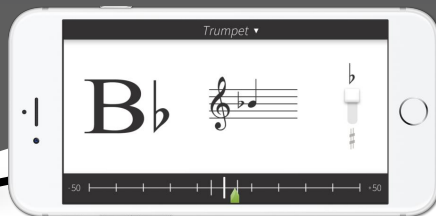
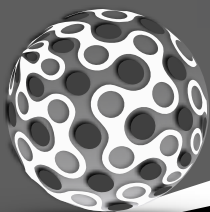
BEGINNING BAND MUSIC BOOK

NAME _____



PART 1

BANDMATE CHROMATIC TUNER
FREE DOWNLOAD!



FREE APP FOR APPLE & ANDROID
www.BandmateTuner.com

BAND KARATE BELT SYSTEM

COMPLETE THE PASS-OFFS & EARN YOUR BELT!

SILVER BELT

#53 Bb Scale | Rhythms 33-40 | #47 "Mary" | #50 "Laughing"

BLACK BELT - ALMOST THERE!

↑6↓6 | Rhythms 25-32 | #42 "Saints" | #45 "Ode"

GREEN BELT

↑5↓5 | Rhythms 21-24 | #35 "Frere" | #39 "Old Mac"

RED BELT - HALFWAY POINT!

16sec. Longtone | ↑4↓4 | Rhythms 17-20 | #27 "Aura" | #32 "Donkey"

PURPLE BELT

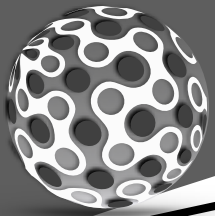
↑3↓3 Notes | Rhythms 9-16 | #19 "Miss Mary" | #23 "Jim Along"

BLUE BELT

12sec. Longtone | Rhythms 5-8 | #14 "Hot Crossed" | #18 "Mary Had"

WHITE BELT

8sec. Longtone | Rhythms 1-4 | #11 "Starlite" | #12 "Rumba"



RHYTHM STUDIES = 1

1 $\frac{4}{4}$

2 $\frac{4}{4}$

3 $\frac{4}{4}$

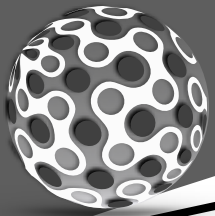
4 $\frac{4}{4}$

5 $\frac{4}{4}$

6 $\frac{4}{4}$

7 $\frac{4}{4}$

8 $\frac{4}{4}$



RHYTHM STUDIES - 2

9 $\frac{4}{4}$

10 $\frac{4}{4}$

11 $\frac{4}{4}$

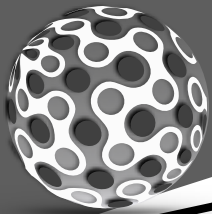
12 $\frac{4}{4}$

13 $\frac{4}{4}$

14 $\frac{4}{4}$

15 $\frac{4}{4}$

16 $\frac{4}{4}$



RHYTHM STUDIES - 3

17 $\frac{4}{4}$

18 $\frac{4}{4}$

19 $\frac{4}{4}$

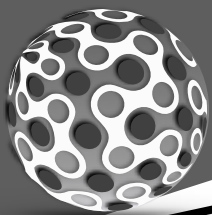
20 $\frac{4}{4}$

21 $\frac{4}{4}$

22 $\frac{4}{4}$

23 $\frac{4}{4}$

24 $\frac{4}{4}$



RHYTHM STUDIES - 4

25 $\frac{4}{4}$

26 $\frac{4}{4}$

27 $\frac{4}{4}$

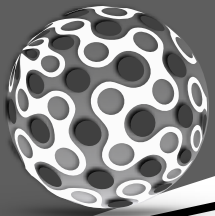
28 $\frac{4}{4}$

29 $\frac{4}{4}$

30 $\frac{4}{4}$

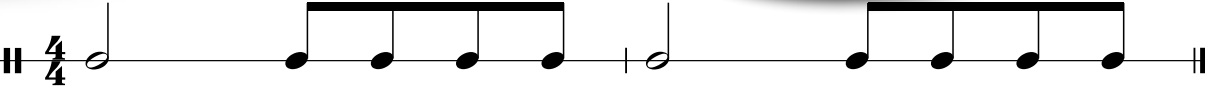
31 $\frac{4}{4}$

32 $\frac{4}{4}$

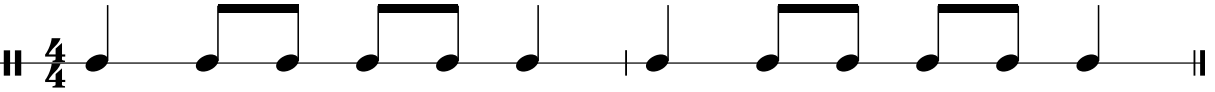


RHYTHM STUDIES - 5

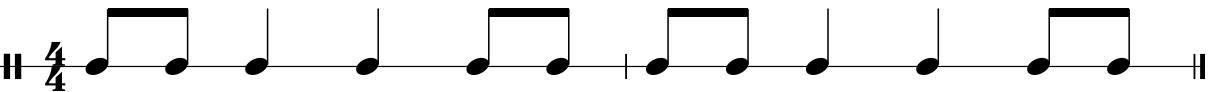
33



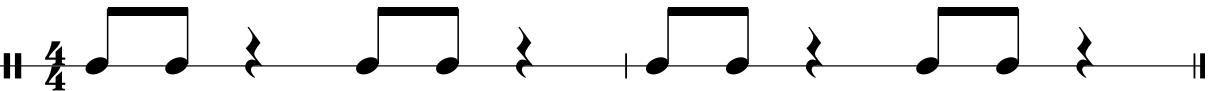
34



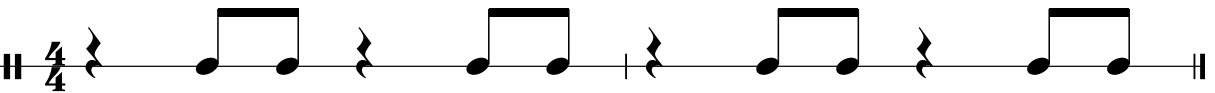
35



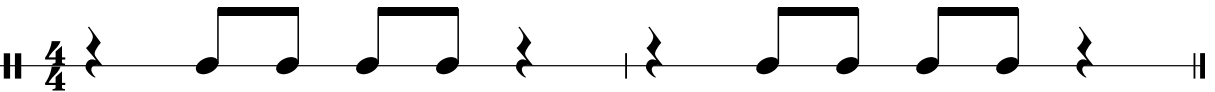
36



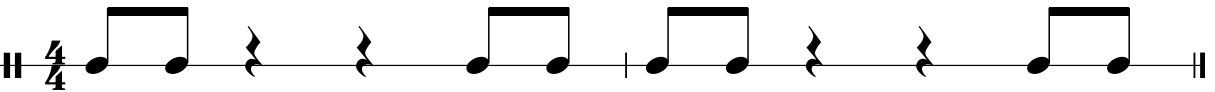
37



38

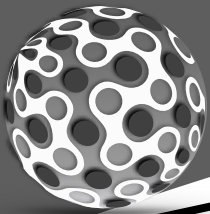


39



40





BEGINNING BAND 1ST NOTES

F
(CONCERT F)

1ST

E_b
(CONCERT E_b)

3RD

D
(CONCERT D)

4TH

1 THE FIRST NOTE

F

2 A HAIR LOWER

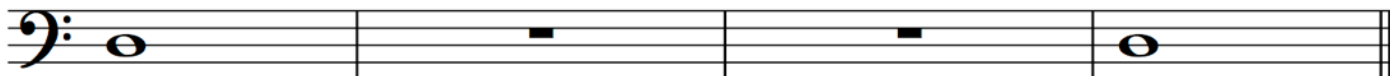
E_b

3 WHICH NOTE IS IT?

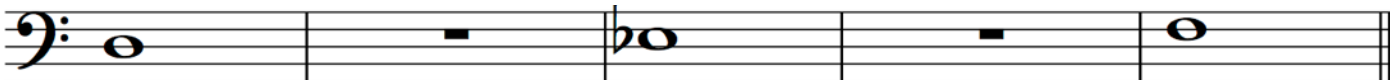
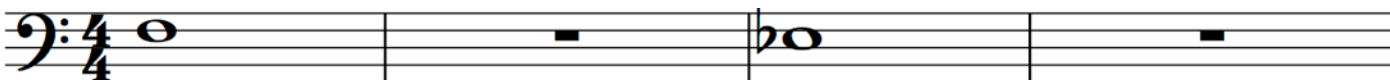


BEGINNING BAND 1ST NOTES

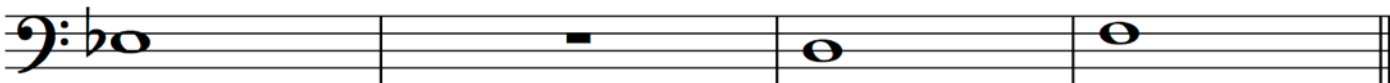
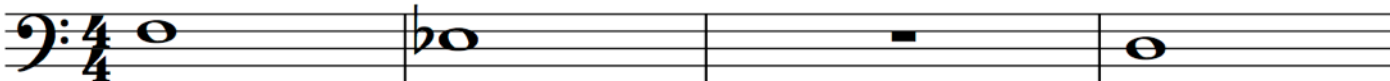
4 3RD NOTE DOWN



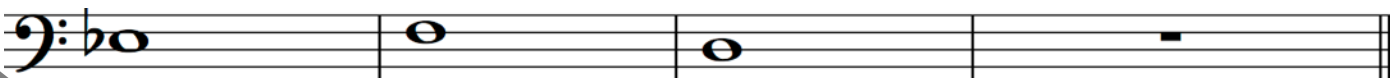
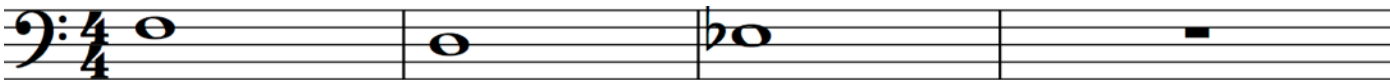
5 DOWN & UP

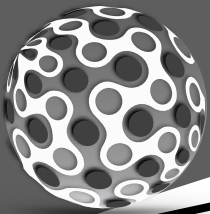


6 DOUBLE UP



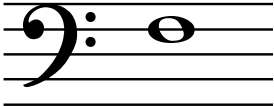
7 3 IN THE MIX






BEGINNING BAND 1ST NOTES

F
(CONCERT F)



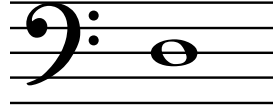
1ST

E_b
(CONCERT E_b)



3RD

D
(CONCERT D)



4TH

8 QUARTER ATTACK



9 DUET DUEL





BEGINNING BAND 1ST NOTES

10 RAIN RAIN, GO AWAY



11 STAR-LITE, STAR-BRITE



12 3 NOTE RUMBA





BEGINNING BAND NEXT 2 NOTES

D
(CONCERT D)

4TH

C
(CONCERT C)

6TH

Bb
(CONCERT Bb)

1ST

13 TWO NOTES LOWER

C **Bb**

14 HOT CROSSED BUNS

15 AU CLARE DE LA LUNE

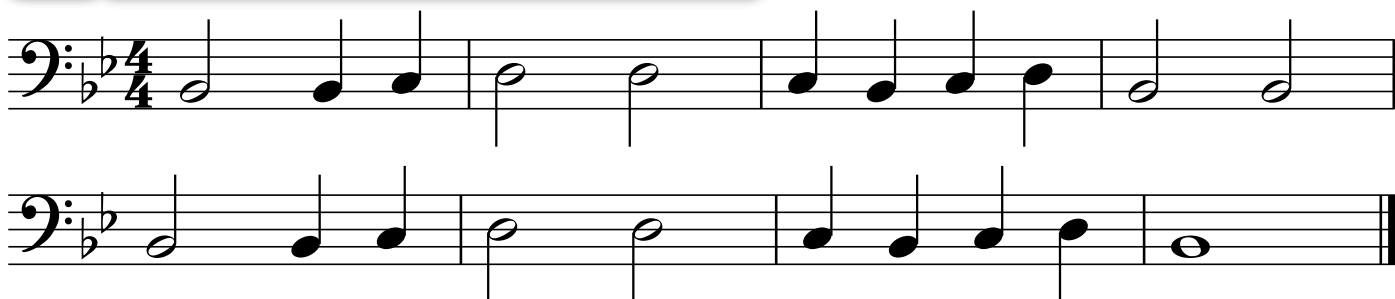


BEGINNING BAND NEXT 2 NOTES

16 GENTLY SLEEP



17 DOWN BY THE STATION



18 MARY HAD A LITTLE LAMB



**THIS IS WHY WE
CLEAN OUR HORNS!!!**



BEGINNING BAND 4 NOTE SONGS

E_b
(CONCERT E_b)

3RD

D
(CONCERT D)

4TH

C
(CONCERT C)

6TH

B_b
(CONCERT B_b)

1ST

19 MISS MARY MACK

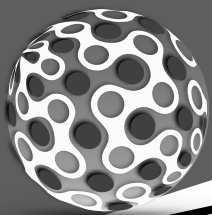
Musical notation for 'Miss Mary Mack' in bass clef, 4/4 time, key of B_b. The melody consists of quarter notes and eighth notes with rests.

20 PEPPERONI PIZZA

Musical notation for 'Pepperoni Pizza' in bass clef, 4/4 time, key of B_b. The melody consists of quarter notes and half notes.

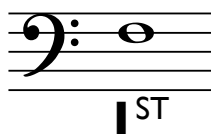
21 NORWEGIAN FOLK SONG

Musical notation for 'Norwegian Folk Song' in bass clef, 4/4 time, key of B_b. The melody consists of quarter notes and half notes.



BEGINNING BAND STRIVE FOR FIVE

F
(CONCERT F)



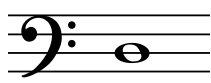
1ST

E_b
(CONCERT E_b)



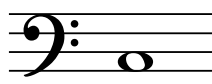
3RD

D
(CONCERT D)



4TH

C
(CONCERT C)



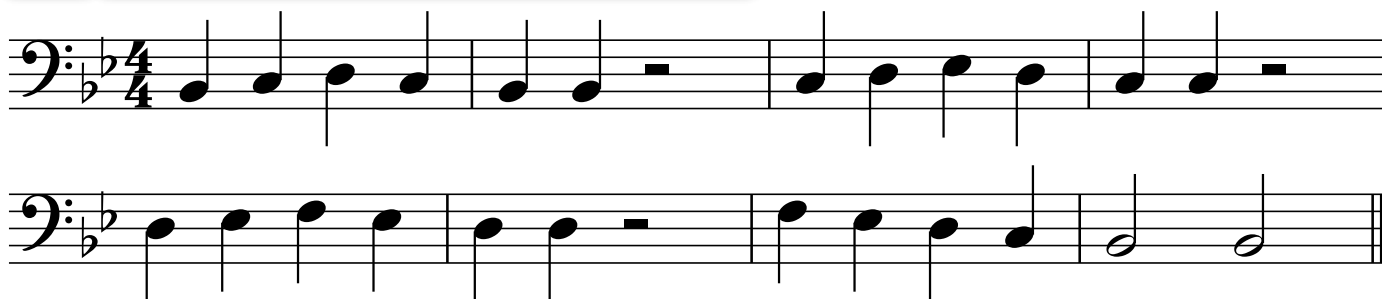
6TH

B_b
(CONCERT B_b)



1ST

22 FIVE NOTE PATTERN

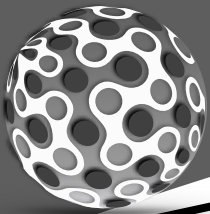


23 JIM ALONG JOSIE



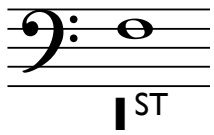
24 GO TELL AUNT RHODIE





BEGINNING BAND STRIVE FOR FIVE

F
(CONCERT F)



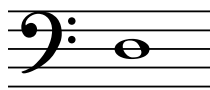
1ST

E_b
(CONCERT E_b)



3RD

D
(CONCERT D)



4TH

C
(CONCERT C)



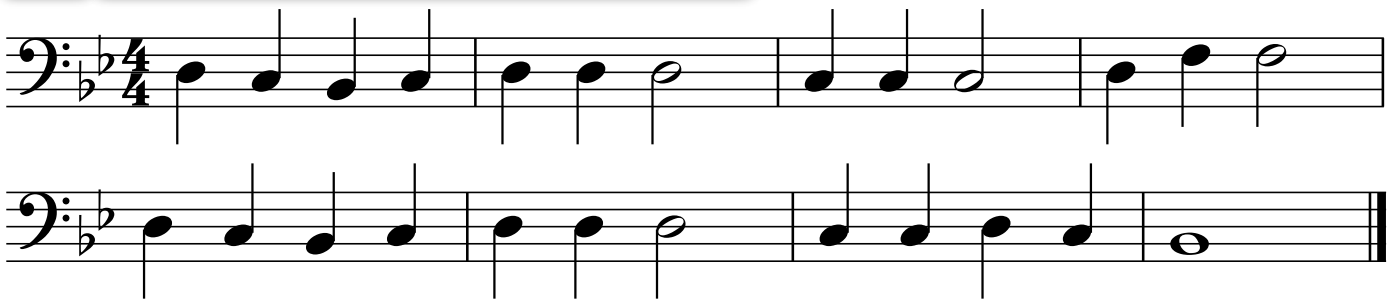
6TH

B_b
(CONCERT B_b)

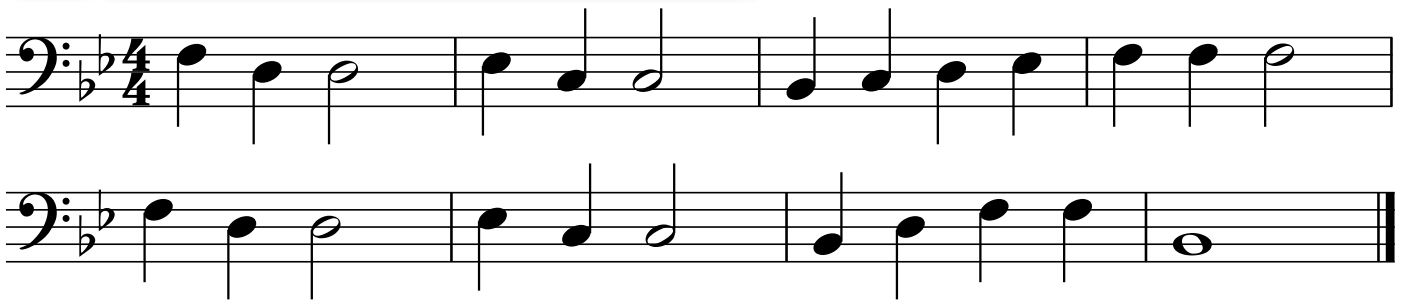


1ST

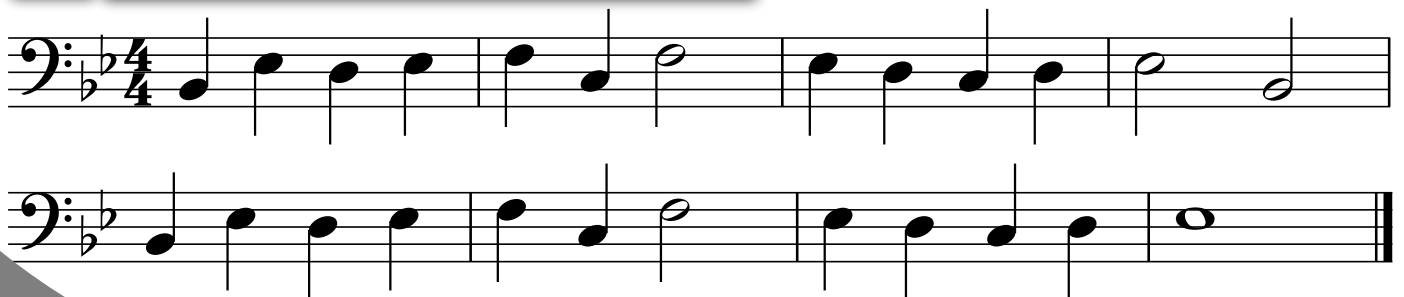
25 MERRILY WE ROLL ALONG



26 LIGHTLY ROW



27 AURA LEE

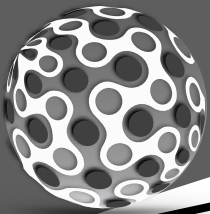




28 JINGLE BELLS

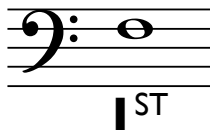
29 REST STOP

30 DREYDL DREYDL



BEGINNING BAND STRIVE FOR FIVE

F
(CONCERT F)



1ST

E_b
(CONCERT E_b)



3RD

D
(CONCERT D)



4TH

C
(CONCERT C)



6TH

B_b
(CONCERT B_b)



1ST

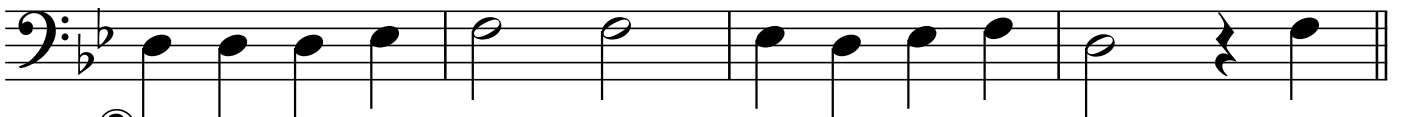
31 GOOD KING WENCESLAS



32 DONKEY ROUND



①



②



33 LITTLE FISH





BEGINNING BAND ADD 6 TO THE MIX

G
(CONCERT G)

4TH

F
(CONCERT F)

1ST

E_b
(CONCERT E_b)

3RD

D
(CONCERT D)

4TH

C
(CONCERT C)

6TH

B_b
(CONCERT B_b)

1ST

34 LONDON BRIDGE

35 FRERE JACQUES

36 MORNING FROM PEER GYNT



BEGINNING BAND ADD 6 TO THE MIX

G
(CONCERT G)

4TH

F
(CONCERT F)

1ST

E_b
(CONCERT E_b)

3RD

D
(CONCERT D)

4TH

C
(CONCERT C)

6TH

B_b
(CONCERT B_b)

1ST

37 THIS OLD MAN

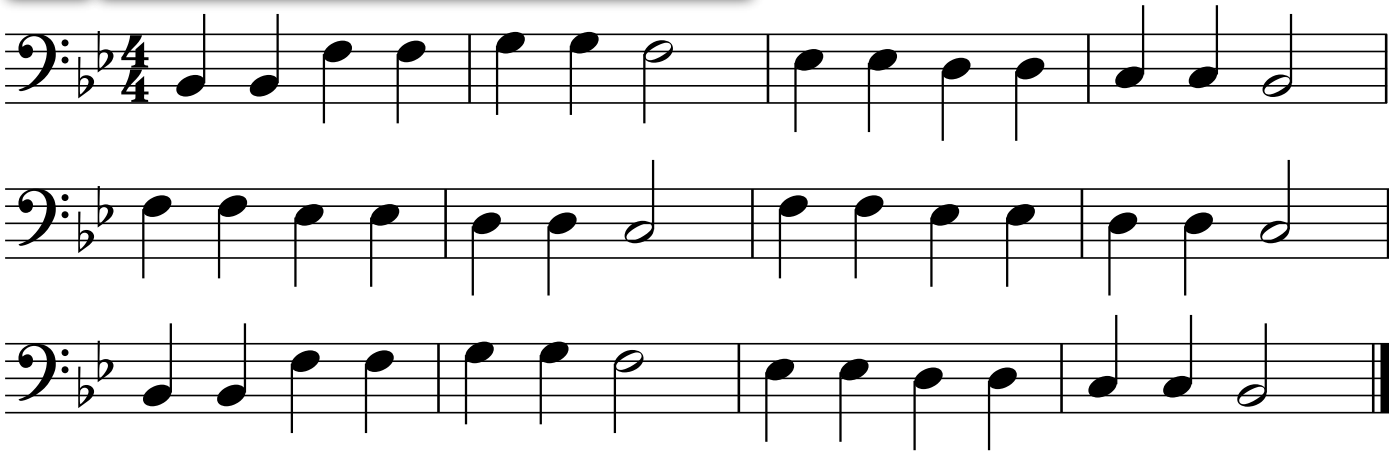
38 THE SNAKE CHARMER

39 OLD MAC DONALD

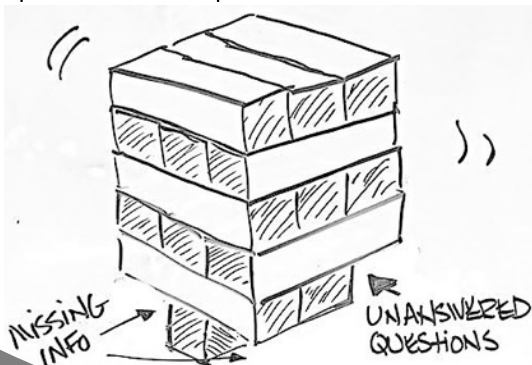
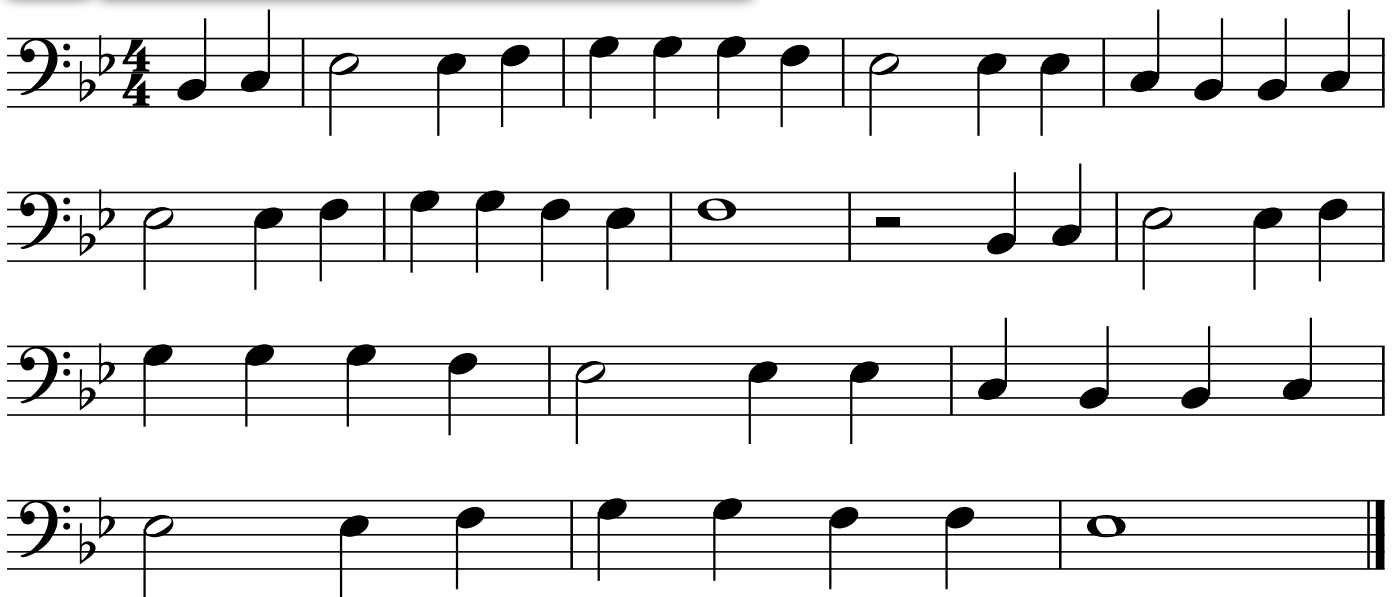


BEGINNING BAND ADD 6 TO THE MIX

40 TWINKLE TWINKLE LITTLE STAR



41 PEACE LIKE A RIVER



YOU CAN'T BUILD A
BAND WITH MISSING
PIECES...
IT WILL FALL OVER.



BEGINNING BAND ADD 6 TO THE MIX

G
(CONCERT G)
4TH

F
(CONCERT F)
1ST

E_b
(CONCERT E_b)
3RD

D
(CONCERT D)
4TH

C
(CONCERT C)
6TH


B_b
(CONCERT B_b)
1ST


42 SAINTS GO MARCHING IN

43 TWINKLE WITH A D.C. AL FINE



44 LONDON BRIDGE D.C. AL CODA

To Coda  D.C. al Coda



Coda

45 ODE TO JOY



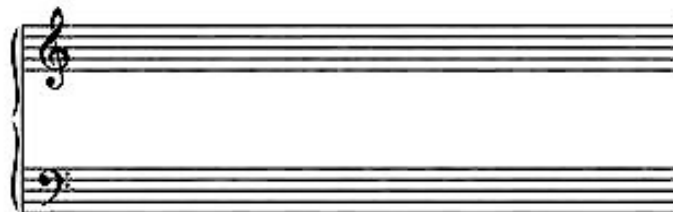
Fine

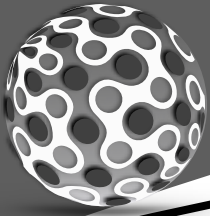
D.S. al Fine

THE SOUND OF SILENCE

Larghestimo

J. S. Zamesnik





BEGINNING BAND 1 MORE BELOW

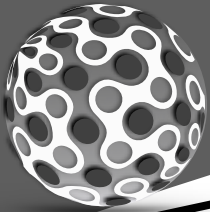
F (CONCERT F) 1 ST	E_b (CONCERT E _b) 3 RD	D (CONCERT D) 4 TH	C (CONCERT C) 6 TH	B_b (CONCERT B _b) 1 ST	A (CONCERT A) 2 ND
--	--	--	--	--	--

46 DOWN ONE MORE

Exercise 46 consists of two staves of music in bass clef, 4/4 time signature, and one flat. The first staff begins with a whole note F (first space). The second staff begins with a whole note E-flat (second space). Both staves contain a sequence of eighth notes and quarter notes, ending with a quarter rest.

47 MARY ANN

Exercise 47 consists of four staves of music in bass clef, 4/4 time signature, and one flat. The first staff begins with a whole note F (first space). The second and third staves contain eighth and quarter notes. The fourth staff contains eighth and quarter notes, ending with a quarter rest.



48 POLLY WOLLY DOODLE



49 SHOO, FLY

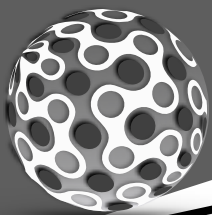


50 LAUGHING SONG



51 7 NOTE PATTERN





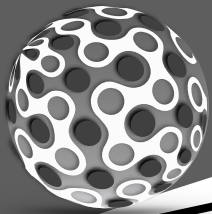
52 FOUR PART LITTLE STAR

Sheet music for the first system of "Four Part Little Star". It consists of four staves labeled A, B, C, and D. Each staff begins with a bass clef, a key signature of two flats (B-flat and E-flat), and a time signature of 2/4. The music is written in a four-part setting with the following notes:

Staff	Measure 1	Measure 2	Measure 3	Measure 4	Measure 5	Measure 6	Measure 7	Measure 8
A	G2, A2	B2, C3	D3, E3	F3 (half)	G3, A3	B3, C4	D4, E4	F4 (half)
B	G2, A2	B2, C3	D3, E3	F3 (half)	G3, A3	B3, C4	D4, E4	F4 (half)
C	G2, A2	B2, C3	D3, E3	F3 (half)	G3, A3	B3, C4	D4, E4	F4 (half)
D	G2, A2	B2, C3	D3, E3	F3 (half)	G3, A3	B3, C4	D4, E4	F4 (half)

Sheet music for the second system of "Four Part Little Star". It consists of four staves labeled A, B, C, and D. Each staff begins with a bass clef, a key signature of two flats (B-flat and E-flat), and a time signature of 2/4. The music is written in a four-part setting with the following notes:

Staff	Measure 1	Measure 2	Measure 3	Measure 4	Measure 5	Measure 6	Measure 7	Measure 8
A	G2, A2	B2, C3	D3, E3	F3 (half)	G3, A3	B3, C4	D4, E4	F4 (half)
B	G2, A2	B2, C3	D3, E3	F3 (half)	G3, A3	B3, C4	D4, E4	F4 (half)
C	G2, A2	B2, C3	D3, E3	F3 (half)	G3, A3	B3, C4	D4, E4	F4 (half)
D	G2, A2	B2, C3	D3, E3	F3 (half)	G3, A3	B3, C4	D4, E4	F4 (half)



BEGINNING BAND 4 PART SONGS

A

B

C

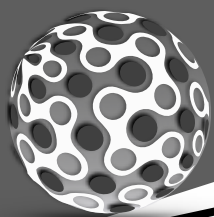
D

A

B

C

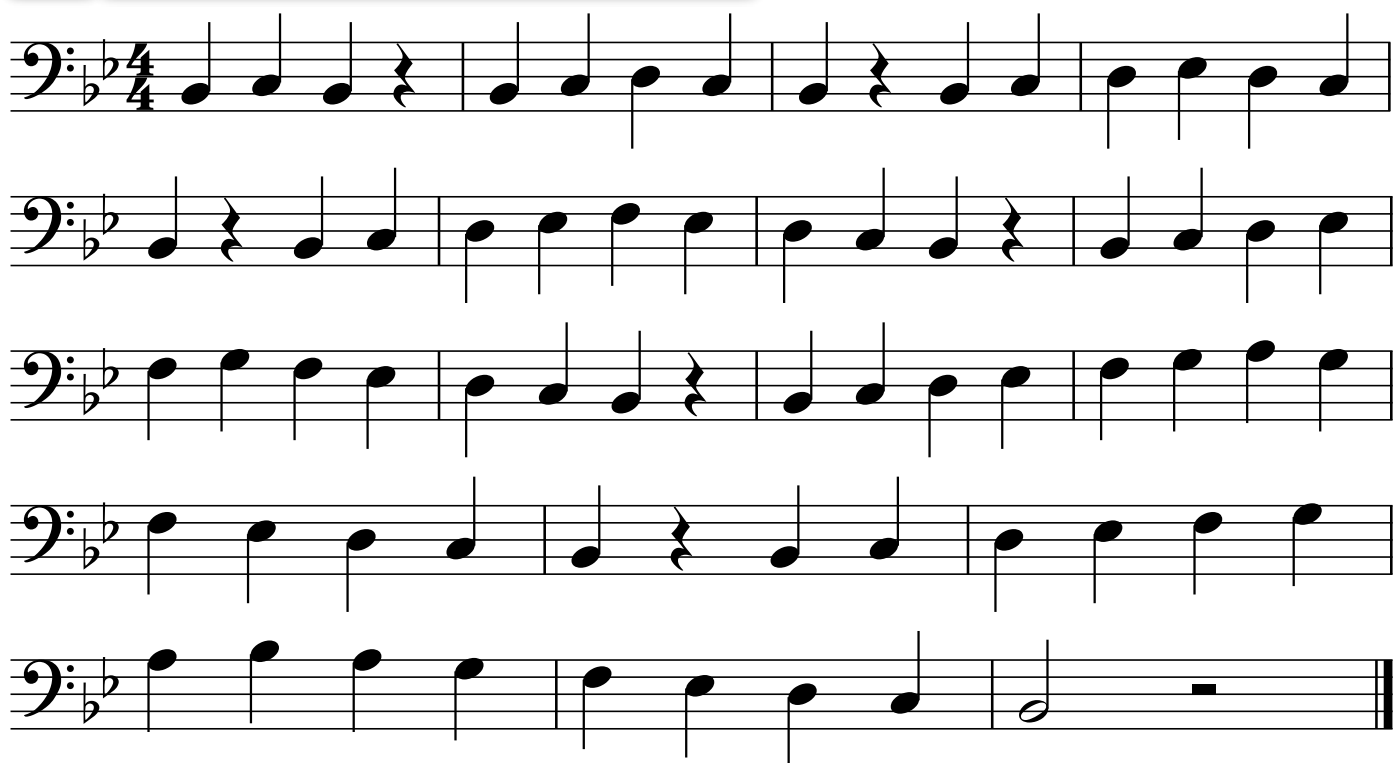
D



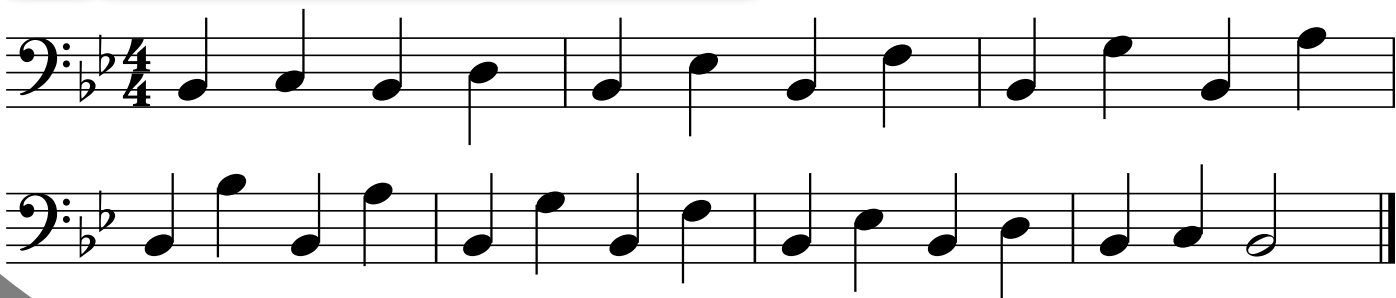
53 Bb SCALE

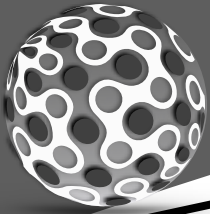


54 Bb SEQUENCE

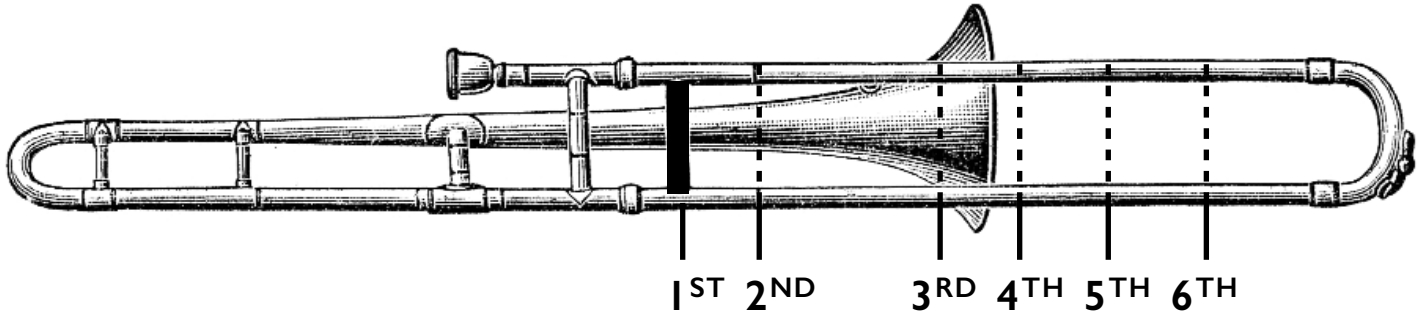


55 Bb ELEVATOR





INSTRUMENT FINGERING CHART



Bb
(CONCERT Bb)

1ST

A
(CONCERT A)

2ND

G
(CONCERT G)

4TH

F
(CONCERT F)

1ST

Eb
(CONCERT Eb)

3RD

D
(CONCERT D)

4TH

C
(CONCERT C)

6TH

Bb
(CONCERT Bb)

1ST

A
(CONCERT A)

2ND

GO ONLINE TO WATCH PERFORMANCES

FLUTE

Nina Perlove
Hubert Laws
Dave Valentin
James Galway
Greg Pattillo
Julius Baker
Robert Aitken
Jean-Pierre Rampal
Jeanne Baxtresser
Benny Goodman
Artie Shaw
Woody Herman
Buddy DeFranco
Pete Fountain
David Shifrin
Richard Stoltzman
Julian Bliss
Larry Combs
Stanley Drucker
Thea King
Mitchell Lurie

CLARINET

Branford Marsalis
John Coltrane
Ben Webster
"Fathead" Newman
Harry Carney
Gerry Mulligan
Dana Colley
Ronnie Cuber
Hermann Baumann
Dennis Brain
Dale Clevenger
Philip Farkas
Barry Tuckwell

BARISAX



Joseph Alessi
Wycliffe Gordon
Christian Lindberg
Slide Hampton
Delfeayo Marsalis
Rubin Eubanks
Christian Lindberg
Ralph Sauer

HORN

Steven Mead
Loren Marsteller
Rich Matteson
Brian Bowman
Leonard Falcone

BARITONE

FAMOUS INSTRUMENTALISTS

Tommy Johnson
Roger Bobo
Jim Self
Doug Tournoquist
Sam Pfaffian
Dan Peratoni
Patrick Sheridan
Baadsvik Oystein

TRUMPET

Wynton Marsalis
Arturo Sandoval
Maynard Ferguson
Chris Botti
Bill Chase
Dizzy Gillespie
Wayne Bergeron
Allen Vizzutti
Chuck Mangione
Jens Lindemann

TUBA

Max Roach
Keiko Abe
Vic Firth
Lionel Hampton
Roy Ayers

Gerald Albright
Candy Dulfer
Charlie Parker
"Cannonball" Adderly
Johnny Hodges
Dr. Otis Murphy
Dr. Eugene Rousseau
Dale Underwood
Maceo Parker

ALTO SAX

PERCUSSION